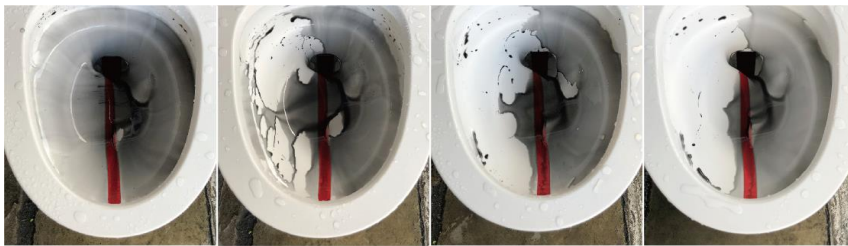


A more functional curved shape cleaner was created from the Fluorine Guard series.

Toilet Cleaner Fluorine w/ Case

introduction

The fluorine-impregnated cleaner + curved handle for cleaning the underside of the edge



First time

Three times

Ten times

After more times

The fluorine-impregnated cleaner makes it harder to get dirty with each wash.

Every time you brush the toilet bowl with the cleaner, a fluorine film is formed on the surface of the bowl, making it more resistant to stains. The effect of the fluorine increases with repeated use.

(The photo was taken after the cleaning operation and the pouring of the colored water. It was repeated the number of times noted below the photo.)



The shape for easy washing of the hard-to-clean underside of the abyss and the back of the toilet bowl

Curved cleaner penetrates into the hard-to-clean areas to remove dirt.



Easy to use, hygienic and simple design

The case with handle allows you to carry the cleaner while it is still in the case, and since it does not reach the case bottom for hygienic storage.

