



Remove dirt with light force Floor Handy Cleanig Brush



Handy brush for effortlessly removing dirt from bath floors with light force.



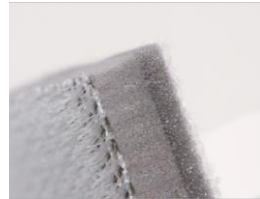
Shaped grip that is easy to hold and does not cause hand pain

The rounded, easy-to-grip shape of the grip efficiently transfers power, so that dirt can be removed with light force.



Stirring brush for thorough cleaning of uneven floors

The shoveling bristles firmly penetrate the crevices of uneven floors to remove dirt.



Polyethylene, which does not absorb water and can be used cleanly, is used

Polyethylene, which does not absorb water, is used for cleanliness.



Shaped brushes reach corners, edges, and grooves

The angled tip makes it easy to get into smudges, corners, and grooves, and to remove dirt in places that are difficult to remove with a regular square brush.



Brushes are replaceable for economical use

The replacement brush (BKB02) is economical because the brush can be replaced and used for a long time.



Self-supporting and hanging for easy storage

It can be stored freestanding or suspended, and can be drained and stored hygienically.

PICK UP!

Four-layer construction of floor handy cleaning brush

The use of hard polyethylene between the bristles allows for more efficient force transmission to the brush surface.

In addition, the material does not absorb water, so it can be used hygienically. The stiff bristles penetrate the grooves of the bathroom floor to remove dirt.